

# 22/00994/COU & ADV – Pavilion, Burrows Playing Fields, Merlin Way, Cheltenham

## Proposals:

Change of use of part of the pavilion to a mixed use of cafe (Class E) and sports pavilion (Class F2)

Erection of 3no. fascia signs and a pole mounted free standing sign

This application is before the Planning Committee because Cheltenham Borough Council is the land owner of the pavilion and Burrows Playing Fields.



**LOCATION PLAN**  
Scale 1:1250 @ A3



**AERIAL VIEW**  
NTS @ A3

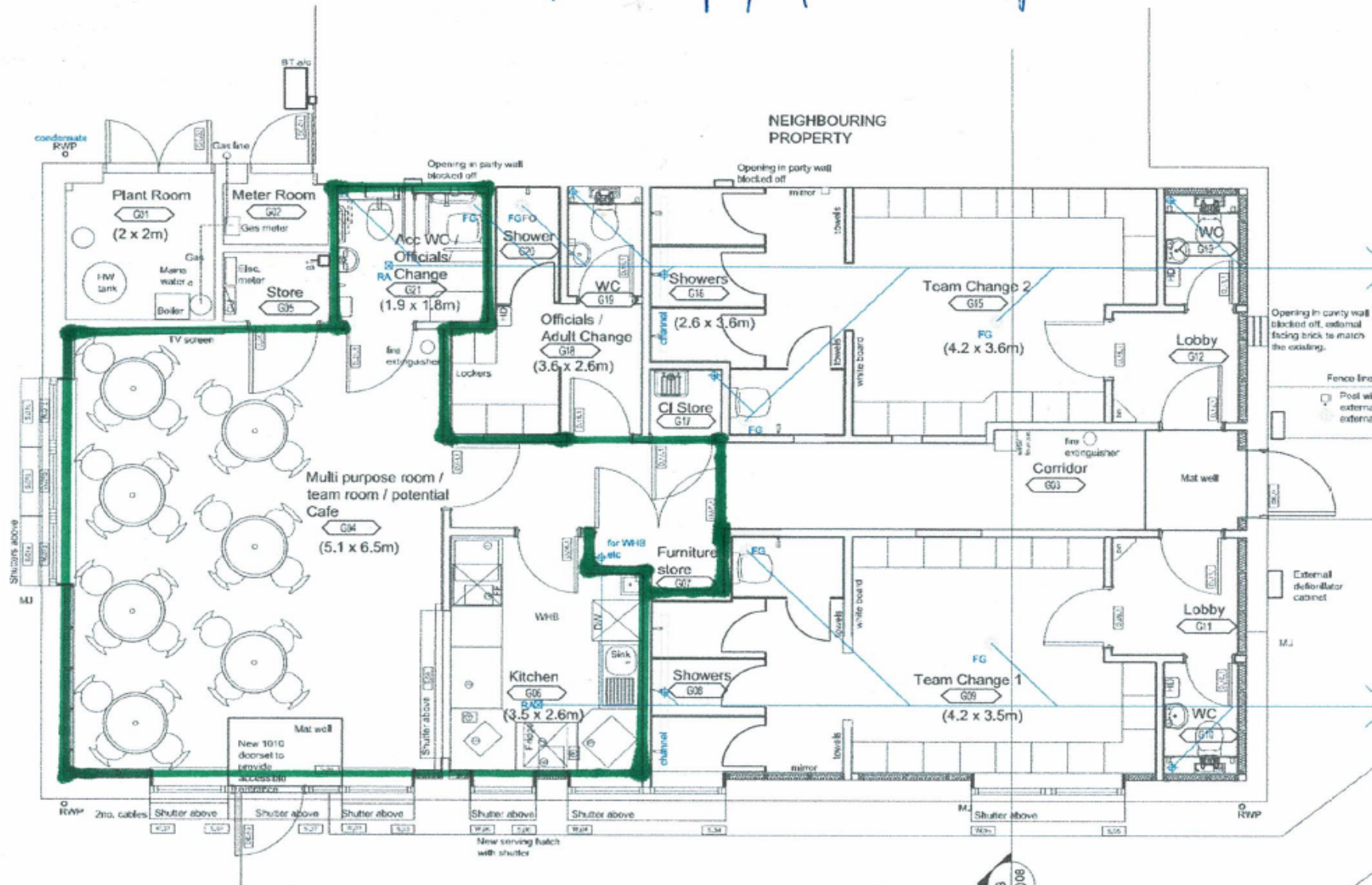
Site Location Plan/Block Plan



Site Plan/Context



Area of proposed cafe

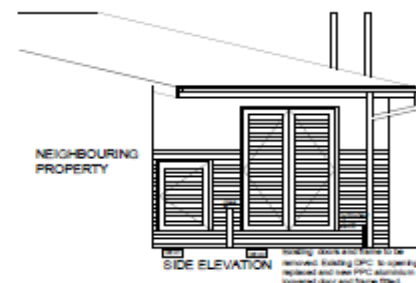


Proposed café area



Location of proposed signage

The side elevation drawing shows a long, low-profile building with a gabled roof. On the left, there are two vertical vents labeled 'Vent' and 'Flue'. The main facade features a central entrance with a door labeled 'Door' and a sign above it that says 'Sign 1'. To the right of the door are several windows, some labeled 'Window' and others 'Sign'. The building has a series of horizontal lines representing siding or panels. The drawing is a technical line drawing with labels for various components.





Sign 1 - Café Hatch





Sign 2 – car park facing elevation





Sign 3 – side elevation



Welcome to Burrow's Field, home of  
**Leckhampton Rovers FC**  
[www.leckhamptonrovers.co.uk](http://www.leckhamptonrovers.co.uk)

COVID-19

WORK AND  
SOCIAL  
STAYING  
AWAY  
OTHER

Burrows playing  
fields

BURROWS  
CAFE  
OPEN →

Sign 4 – car park sign

# Key Planning Matters

- Principle of proposed mixed use of café and sports pavilion
- Impact on use and function of existing playing fields
- Neighbour amenity (noise and disturbance)
- Design and scale of proposed signage
- Public safety (signage)



# Summary of Conditions

Standard conditions for both applications plus conditions relating to:

- Customer opening hours for café use
- Restriction on use - café and sports pavilion (no permitted change of use within Class E)
- Provision of refuse and recycling storage facilities